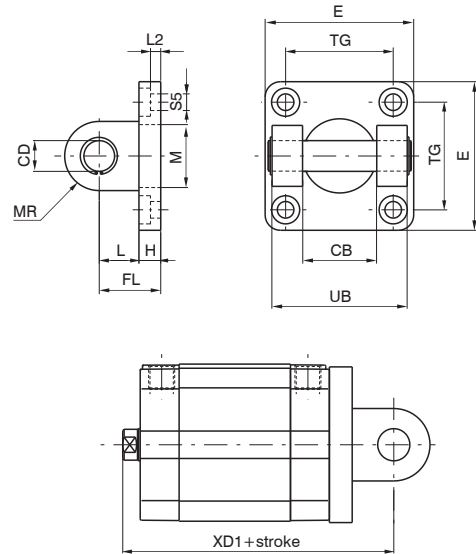


Rear clevis (MP2)

Coding: 1500.Ø.09F

BORE
20 = Ø20
25 = Ø25
32 = Ø32
40 = Ø40
50 = Ø50
63 = Ø63
80 = Ø80
100 = Ø100



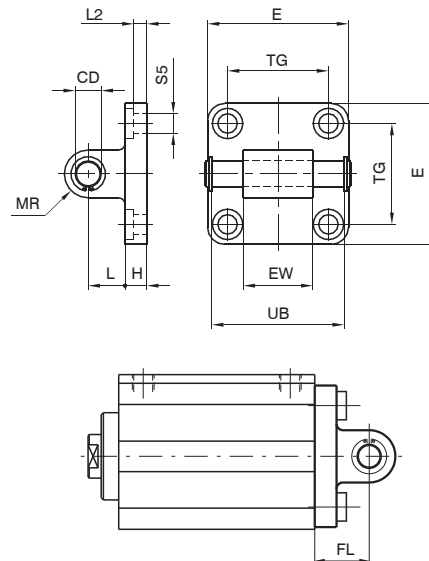
This type of mounting allows anchorage of the cylinder either parallel or right angle to plane; the cylinder rod can oscillate and self-align as necessary when under load. It is made of aluminium alloy and painted black.

Bore	20	25	32	40	50	63	80	100
CB (H9)	16	20	26	28	32	40	50	60
CD (H9)	8	10	10	12	12	16	16	20
E	35	40	45	52	65	75	95	115
H	6	8	9	9	11	11	14	14
L	12	12	13	16	16	21	22	27
MR	8	9	10	12	12	16	16	20
TG	26	28	32,5	38	46,5	56,5	72	89
UB	35	40	45	52	60	70	90	110
FL	18	20	22	25	27	32	36	41
L2	/	/	5,5	5,5	6,5	6,5	10	10
S5 (H13)	5,5	6,6	6,6	6,6	9	9	11	11
Weight (g)	45	75	80	130	185	310	530	910

Rear male clevis (MP4)

Coding: 1500.Ø.09/1F

BORE
20 = Ø20
25 = Ø25
32 = Ø32
40 = Ø40
50 = Ø50
63 = Ø63
80 = Ø80
100 = Ø100



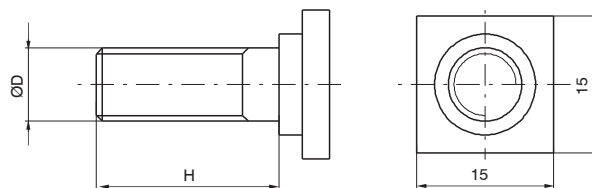
This type of mounting allows anchorage of the cylinder either parallel or right angle to plane; the cylinder rod can oscillate and self-align as necessary when under load. It is made of aluminium alloy and painted black.

Bore	20	25	32	40	50	63	80	100
CD (H9)	8	10	10	12	12	16	16	20
E	35	40	45	52	65	75	95	115
EW	16	20	26	28	32	40	50	60
H	6	8	9	9	11	11	14	14
L	12	12	13	16	16	21	22	27
MR	8	9	10	12	12	16	16	20
TG	26	28	32,5	38	46,5	56,5	72	89
UB	35	40	46	53	61	71	91	111
FL	18	20	22	25	27	32	36	41
L2	/	/	5,5	5,5	6,5	6,5	10	10
S5 (H13)	5,5	6,6	6,6	6,6	9	9	11	11
Weight (g)	53	85	90	130	190	340	580	960

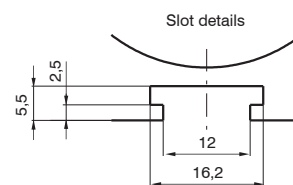
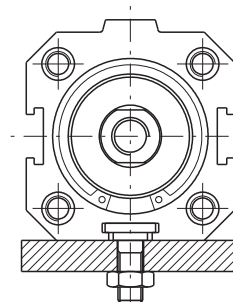
Slot fixing screws

Coding: 1500.10F

SIZE
5 = from Ø20 to Ø32
6 = from Ø40 to Ø63
8 = Ø80 and Ø100



Example of mounting with square head screws

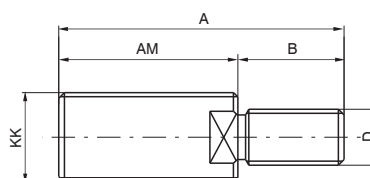


Bore	20	25	32	40	50	63	80	100
ØD	M6	M6	M6	M8	M8	M8	M10	M10
H	15	15	15	20	20	20	25	25
Weight (g)	10			18			25	

Nipple with ISO standard thread

Coding: 1500.Ø.17F

BORE
20 = Ø20
25 = Ø25
32 = Ø32
40 = Ø40
50 = Ø50
63 = Ø63
80 = Ø80
100 = Ø100



Bore	20	25	32	40	50	63	80	100
KK	M8x1,25	M10x1,25	M10x1,25	M12x1,25	M16x1,5	M16x1,5	M20x1,5	M20x1,5
AM	20	22	22	24	32	32	40	40
A	26	30	32	36	47	47	58	58
B	6	8	10	12	15	15	18	18
D	M4	M5	M6	M10	M12	M12	M16	M16
Weight (g)	8	15	16	27	65	65	110	110

Fitted on the female thread of the compact cylinders, restore the ISO configurations rod (ISO 6432 for cylinders Ø20 and Ø25; ISO 6431 for cylinders from Ø32 to Ø100).